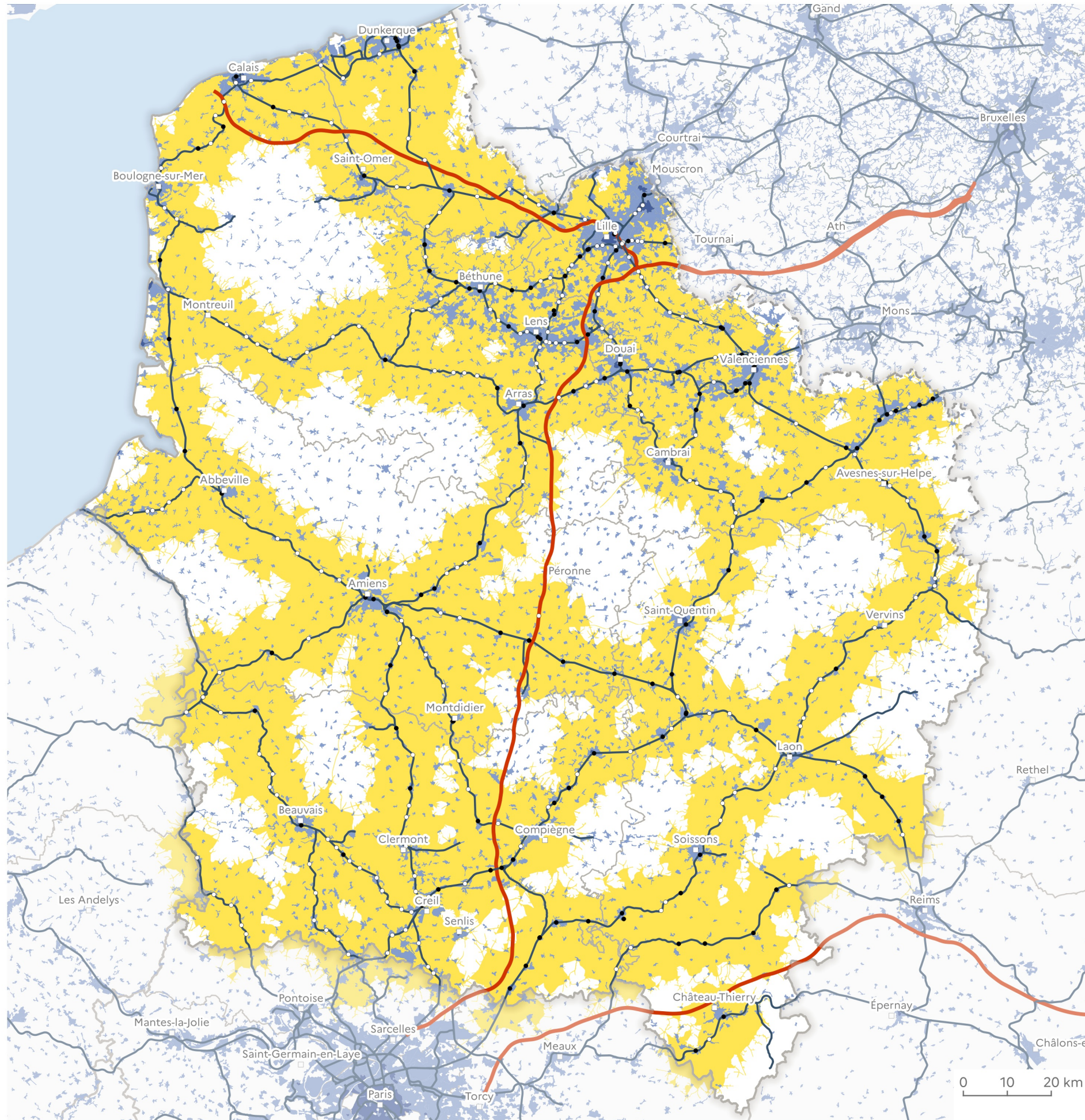




AIRE DE DESSERTE À 15 MINUTES DES GARES FERROVIAIRES

MOBILITÉ DANS LES TERRITOIRES









 Isochrone de 15 minutes autour des gares actives

Types de voies de chemins de fer

-  Grande vitesse
-  Normale

Gares

-  Voyageurs
-  Voyageurs et fret

-  Limite régionale
-  Limite départementale
-  Frontière nationale
-  Réseau routier principal

Conception : DREAL Hauts-de-France/SIDDEE/PAD
Données sources :
CLC2018
SNCF
Fonds de plan :
© IGN ADMIN EXPRESS®
Réf. : 22-099-L (31/03/2023)